

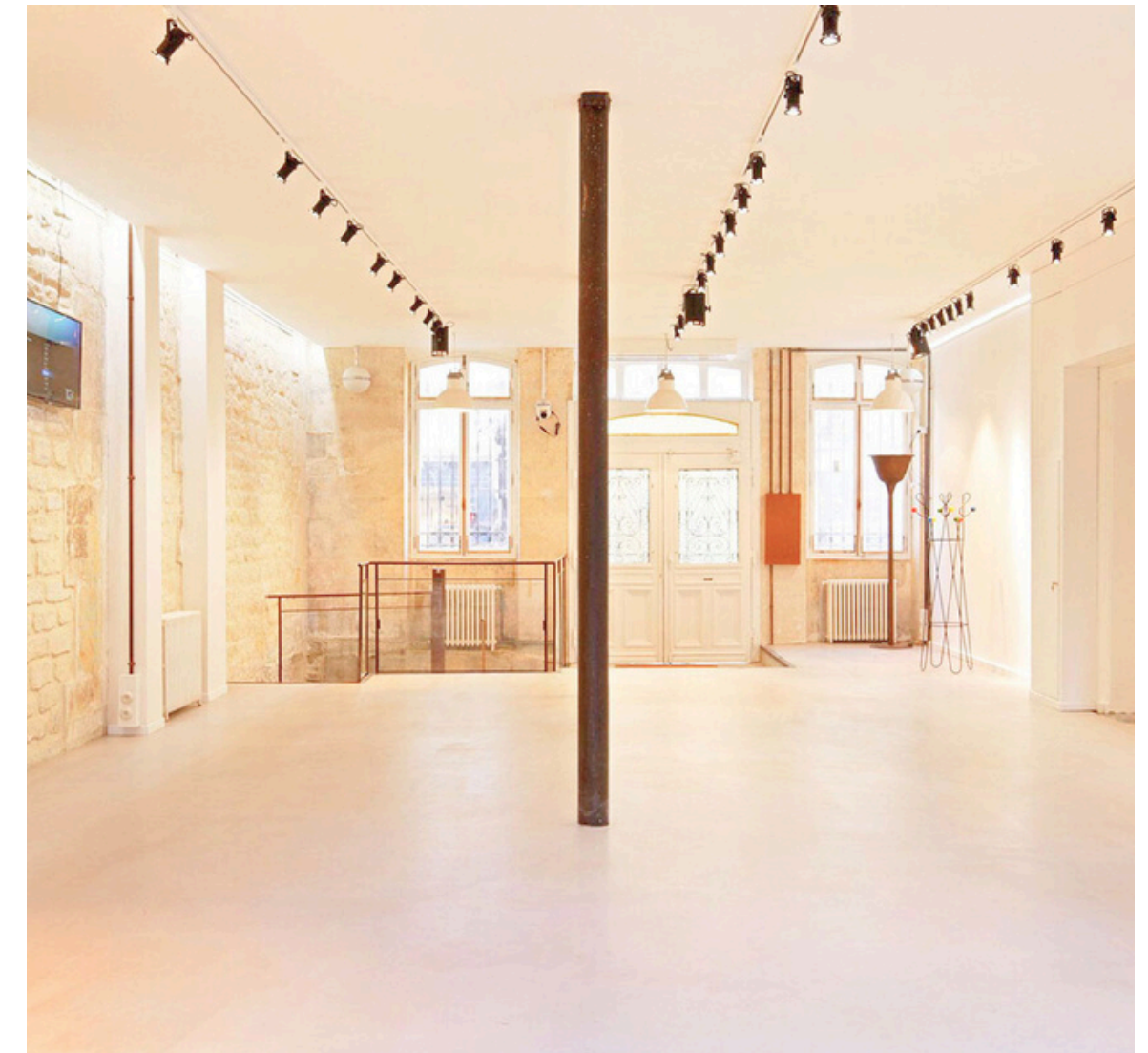
LES **SHOWROOMS**
DU **MARAIS**

SHOWROOM TURENNE

118 RUE DE TURENNE, 75003 PARIS

SORTIE
DE
VOITURE
PRIÈRE DE NE
PAS
STATIONNER

Located at the end of **Rue de Turenne**, near **République**, **Cirque d'Hiver**, and **Filles du Calvaire**, Espace Turenne enjoys a strategic location in the heart of the Marais. Surrounded by iconic spots such as **Rue de Bretagne** and **Carreau du Temple**, this vibrant neighborhood blends designer boutiques, art galleries, and popular cafés, attracting a diverse clientele of strollers, locals, and international visitors. Among the renowned establishments nearby are Café de la Poste, Isabel Marant, Ami, Cassina, Farrow & Ball, and the famous chocolatier Jacques Génin, making this area a key intersection between the historic and trendy axes of the Marais, embodying both the authentic and modern charm of Paris.





Espace Turenne was historically a former warehouse of the textile industry in the heart of the Marais. It is located in a 19th-century Haussmann-style building made of cut stone.

The space features all the hallmarks of Parisian commercial and industrial aesthetics: white Marais stone, Eiffel-style metal structures, and horizontal and vertical skylights.

To maximize natural light, the floors (polished concrete and restored wooden floors), walls, and ceilings are finished in very light tones (off-white, pale gray, etc.).



The **430 sq. m** Showroom 118 Turenne stands out for its unique layout across three distinct levels, all connected by **three staircases** and a freight elevator. Each level is equipped with restrooms and a kitchenette:

- The **ground floor spans 210 sq. m**, measuring 30 meters in length and 7 meters in width, featuring a 40 sq. m central industrial-style skylight that allows for optimal natural light.
- The **first floor covers 70 sq. m** beneath a skylight, which can serve as an independent showroom or a private reception room.
- The **basement, at 150 sq. m**, is accessible via two staircases and the freight elevator. This grand space, with high ceilings and white stone walls, benefits from natural light through six glass slabs situated under the central skylight.



SURFACE & CAPACITY

Ground floor: 210 sq. m

Ceiling height: 3.70 to 3.80 meters

Capacity: 200 people

Basement: 150 sq. m

Ceiling height: 3 meters

First floor: 70 sq. m

Ceiling height: 2.85 to 3.90 meters

Facade and Display Windows:

Facade length: 9 meters

Total Capacity:

Capacity : 200 people

ERP Category 5, M-type activity

TECHNICAL EQUIPMENT



Professional lighting :
Directional spotlights.

Equipped kitchenette :
Refrigerator, dishwasher, Nespresso coffee machine, kettle.

Picture rails for hanging artwork

Intrusion alarm system

Air conditioning and radiators

Wi-Fi connection

Restrooms























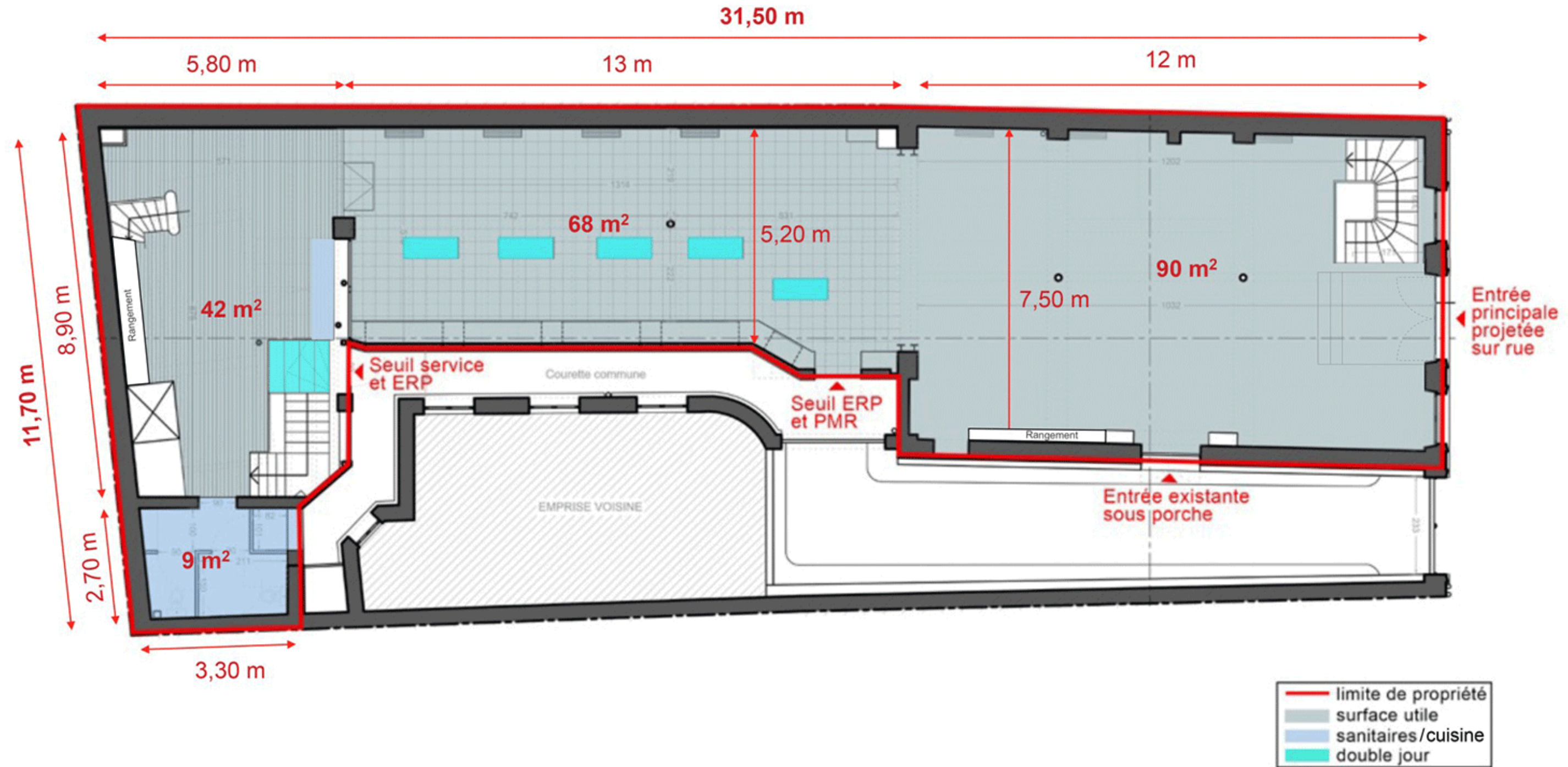






PLAN

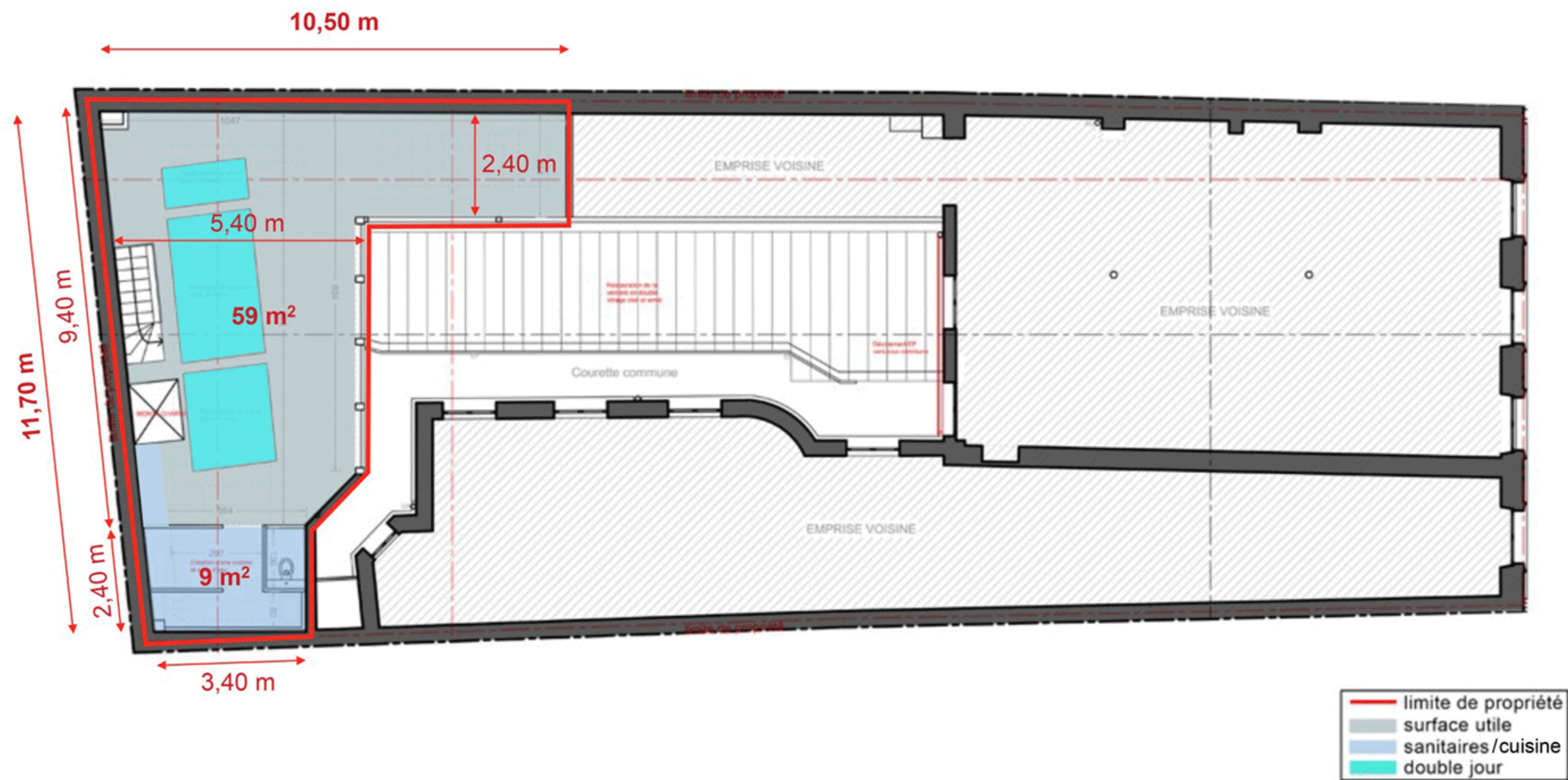
Plan RDC / surface utile : 209 m²



SHOW-ROOM - 118, Rue de Turenne - 75003 Paris

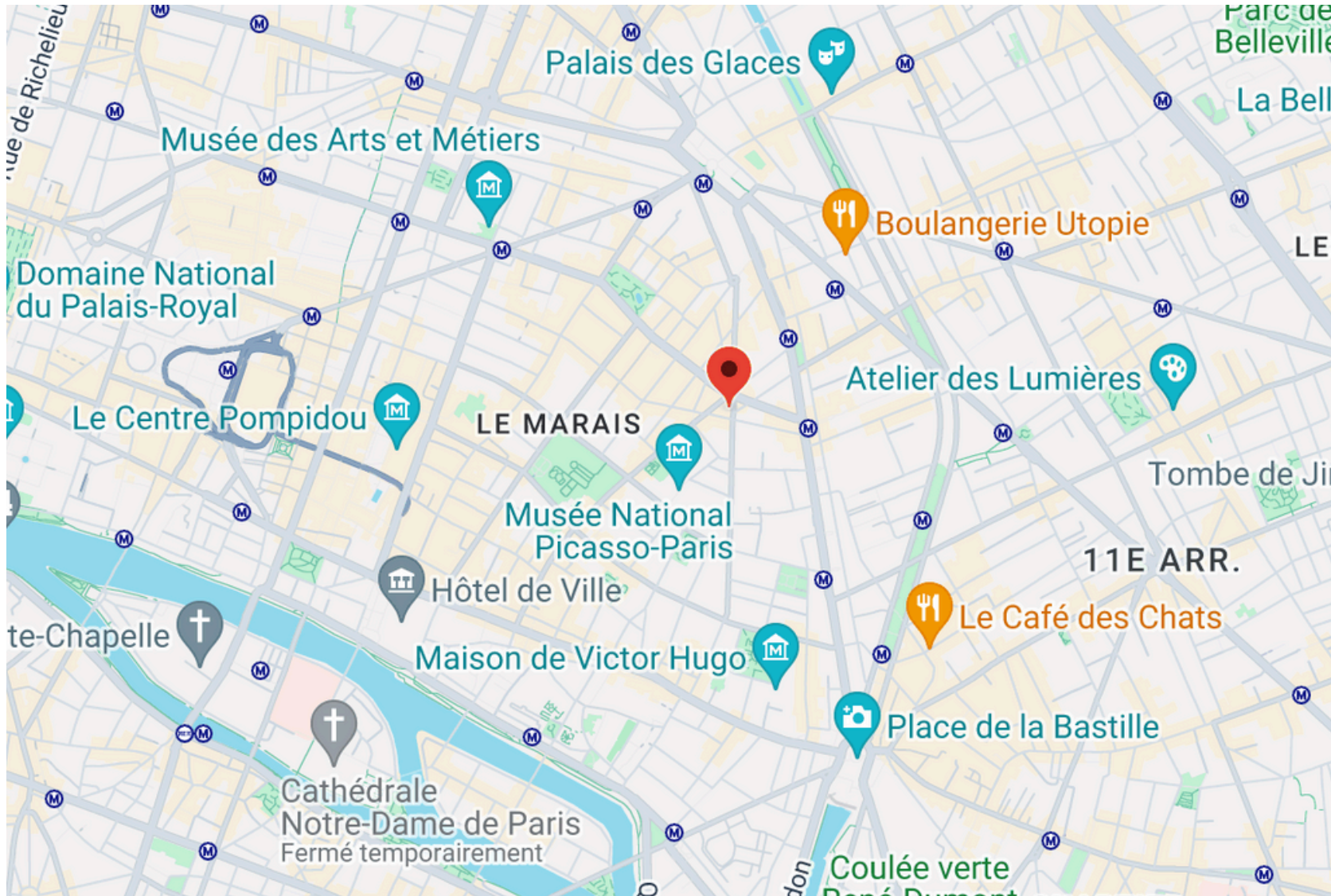
PLAN

Plan R + 1 / surface utile : 68 m²

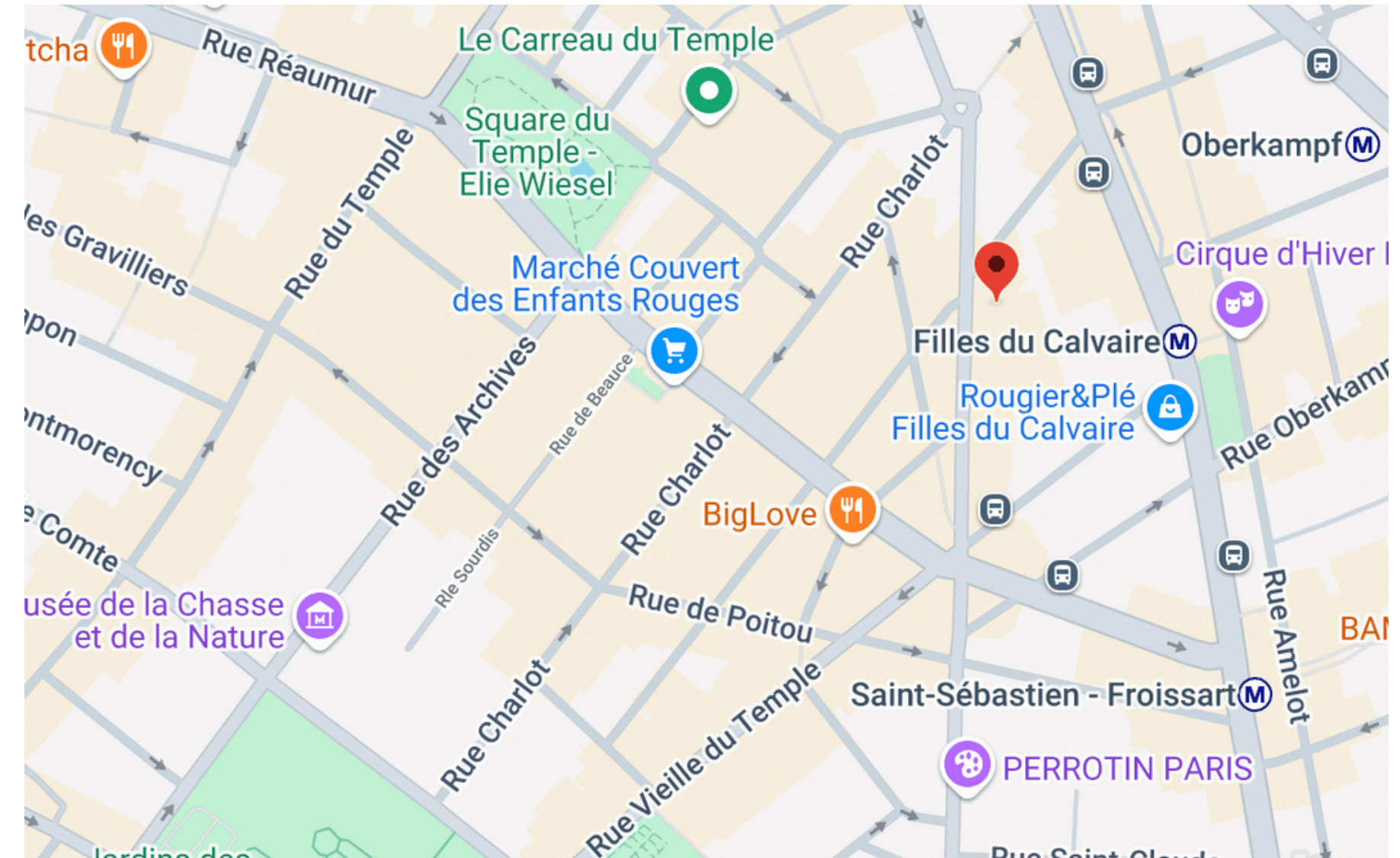


SHOW-ROOM - 118, Rue de Turenne - 75003 Paris

Location in Paris



Neighborhood Map





Métro : Filles du Calvaire (ligne 8) - Oberkampf (Lignes 5-9)



Bus : N°29 « Rue Vieille du Temple - Saint-Gilles » - N°96 « Turenne - Saint-Gilles »



Parking : 14 rue de Bretagne, 75003 Paris



Velib : N° 3005 « Rue de Turenne »

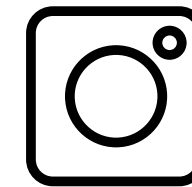


CONTACT US

Christine Muller : +33 6 14 95 72 30
christine@lesshowroomsdumarais.com

Alaric Eleb : +33 6 16 12 38 40
alaric@lesshowroomsdumarais.com

JOIN US



[@lesshowroomsdumarais](https://www.instagram.com/lesshowroomsdumarais)



[Les Showrooms du Marais](https://www.linkedin.com/company/les-showrooms-du-marais)



[lesshowroomsdumarais.com](https://www.lesshowroomsdumarais.com)