



## - ESPACE RÉAUMUR -

This 475sqm venue is located at 101 rue Réaumur, 75002, Paris. The storefront of this exceptional corner store is composed of two entrances and 11 stainless steel windows from the 1970s, thus totaling a storefront of approximately 30 meters in length.





## RÉAUMUR'S STREET

The Haussmann breakthrough of rue Réaumur creates a continuum between the Parisian district called La Bourse (place which hosts Tranoï during fashion week) and, beyond boulevard Sébastopol, rue de Bretagne leading to central Marais.

Located at the corner of rue de Cléry and rue Réaumur, at the exit of Metro Sentier, this building juts out like the bow of an ocean liner, created in 1898 by Albert Walwein (1851-1916), it won the competition for the most unique Parisian storefront. It is part of a succession of remarkable buildings from Réaumur street.





## A UNIQUE 475 SQM STORE WITH IS 70'S STYLE STOREFRONT COVERING MORE THAN 30 METERS OF WINDOWS AND INOX.

### **The shop –**

It consists of a ground floor of 210 m<sup>2</sup> which can accommodate 200 people and a basement of 240 m<sup>2</sup>. The commercial basement, which can accommodate 100 people is accessible to the public via two staircases and an elevator.

The venue can host 291 people at the same time from 9 am to 2 am.

The interior has been renovated in line with the stainless steel elements of the storefront and around the spiral staircase in stainless steel from the 70s, the real centerpiece of this space.

The marble floor on the ground floor has been enhanced, the Eiffel structures cleared to the maximum in order to restore its superb appearance to this mythical store.

The light provided by this multitude of windows is reinforced by a ceiling height of more than 4m both on the ground floor and in the basement. Professional lighting made up of powerful directional spotlights, associated with more vintage pieces allow a quality enhancement of the works and the products presented. Our bias has been to renovate the exterior as the interior identically in order to preserve its character.

30 METER'S OF STOREFRONT



## ENTRANCE FROM OUTSIDE



ENTRANCE FROM INSIDE



GROUND FLOOR RÉAUMUR'S STREET



GROUND FLOOR CLÉRY'S STREET





## GROUND FLOOR





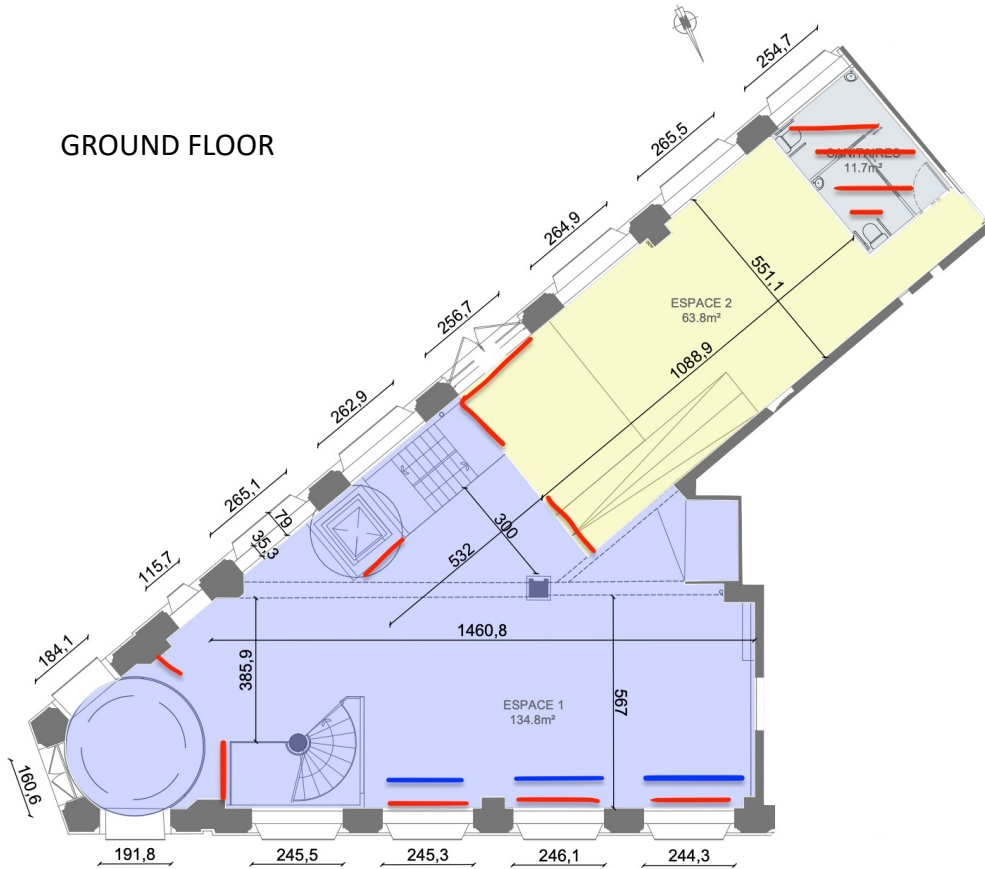
## BASEMENT



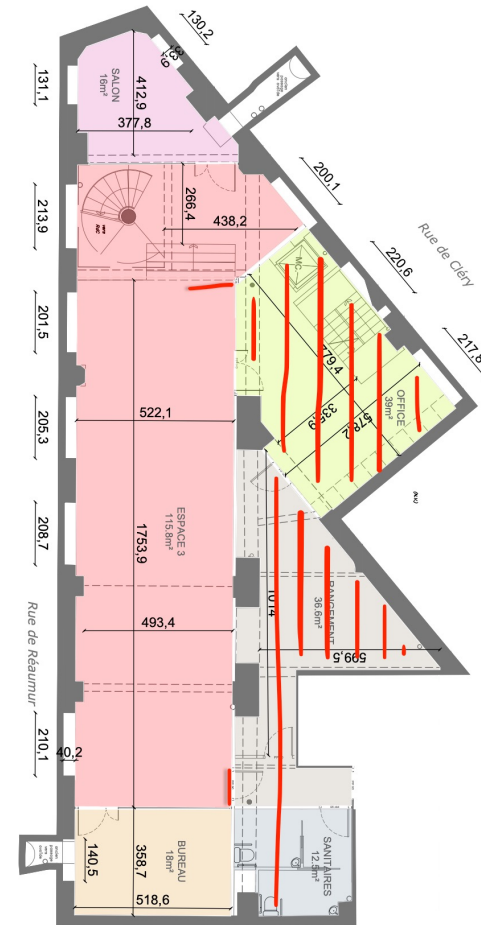


## FLOOR MAP

GROUND FLOOR



BASEMENT





# Les Showrooms du Marais

- Situation dans Paris-





# Les Showrooms du Marais

- Le quartier -

